

DRAFT WQFAM 3.5 DATA SHEET

Part 1 Clarity

Site/Project Name	Site/Project ID	Conducted by
		Date

Clarity:

Secchi Depth (meters): _____
or

Transparency Tube Number: _____
(centimeters)

Container Visual Review (look through the container)

Can't see through the bottle = 1
Can see through container, but can't read text on datasheet =4
Can see through container, and can read text on datasheet =6
Pretty clear, but not as clear as bottled water = 8
As clear as bottled water =10

Container Visual Review Score = _____

Visual Indicators

Floating Solids	Yes / No	Describe
Suspended Solids	Yes / No	Describe
Oil / Fuel Sheen	Yes / No	Color and amount
Foam	Yes / No	Describe thickness, color, how much surface it covers

DRAFT WQFAM 3.5 DATA SHEET

Part 2 Algae

Site/Project Name	Site/Project ID	Conducted by
		Date

Algal Community - Circle score or check box

	Score
Algal community composition is not characterized by species tolerant of and associated with water quality degradation.	10
Some of the algal community composition consists of species tolerant of and associated with moderate water quality degradation.	7
Half of the algal community composition consists of species tolerant of and associated with moderate water quality degradation.	5
Much of the algal community composition consists of species tolerant of and associated with moderate water quality degradation.	3
The algal community composition consists predominantly of species tolerant of and associated with highly degraded water	0

Algal community composition =

Algal Biomass

Algal biomass low	10
↕	7
Algal biomass moderate	5
↕	3
Algal biomass excessive	0

Algal biomass score =

Blue-Green Algae

No blue-green or filamentous green algae	10
Approximately 30% blue-green or filamentous green algae	7
Approximately 50% blue-green or filamentous green algae	5
Approximately 70% blue-green or filamentous green algae	3
Blue-green or filamentous green algae monoculture	0

Blue-green Algae score =

Algal Cover

Algal cover characteristic for that wetland type	10
Most of the algal cover characteristic for that wetland type	7
Half of the algal cover characteristic for that wetland type	5
Some of the algal cover characteristic for that wetland type	3
Algal cover completely uncharacteristic for that wetland type	0

Algal cover score =

DRAFT WQFAM 3.5 DATA SHEET

Part 3 Plant Species and Condition

Site/Project Name	Site/Project ID	Conducted by
		Date

Examples of Undesirable Species

Genus	Species	Common Name
<i>Alternantera</i>	<i>philoxeroides</i>	alligator weed
<i>Ardisia</i>	<i>elliptica</i>	shoebuttton ardisia
<i>Brachiaria</i>	<i>mutica</i>	para grass
<i>Casuarina</i>	<i>equisetifolia</i>	Australian pine
<i>Colocasia</i>	<i>esculenta</i>	taro
<i>Cupaniopsis</i>	<i>esculenta</i>	carrotwood
<i>Dioscorea</i>	<i>bulbiflora</i>	air potato
<i>Eichornia</i>	<i>crassipes</i>	water hyacinth
<i>Hydrilla</i>	<i>verticillata</i>	hydrilla
<i>Hymenachne</i>	<i>amplexicaulis</i>	West Indian marsh grass
<i>Ludwigia</i>	<i>octovalvis</i>	water primrose
<i>Ludwigia</i>	<i>peruviana</i>	primrose willow
<i>Lygodium</i>	<i>japonicum</i>	Japanese climbing fern
<i>Lygodium</i>	<i>microphyllum</i>	old world climbing fern
<i>Mikania</i>	<i>scandens</i>	climbing hempweed
<i>Melaleuca</i>	<i>quincunervia</i>	melaleuca
<i>Panicum</i>	<i>repens</i>	torpedo grass
<i>Paspalum</i>	<i>notatum</i>	bahia grass
<i>Pistia</i>	<i>stratiotes</i>	water lettuce
<i>Psidium</i>	<i>guajava</i>	guava
<i>Rhodomyrtus</i>	<i>tomentosqa</i>	downy rose myrtle
<i>Sapium</i>	<i>secunotatum</i>	Chinese tallow
<i>Schinus</i>	<i>terebinthifolius</i>	Brazilian pepper
<i>Senna</i>	<i>pendula</i>	climbing cassia
<i>Syzygium</i>	<i>cumini</i>	Java plum
<i>Tespesia</i>	<i>populnea</i>	seaside mahoe
<i>Typha</i>	spp.	cattail
<i>Urena</i>	<i>lobata</i>	Caesar weed
<i>Wedelia</i>	<i>trilobata</i>	wedelia

Plants Observed

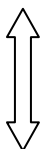
--	--

Plant Community

	Score
Plant community composition is not characterized by species tolerant of and associated with water quality degradation.	10
Some of the plant community composition consists of species tolerant of and associated with moderate water quality degradation.	7
Half of the plant community composition consists of species tolerant of and associated with moderate water quality degradation.	5
Much of the plant community composition consists of species tolerant of and associated with moderate water quality degradation.	3
The plant community composition consists predominantly of species tolerant of and associated with highly degraded water	0

Plant community composition =

Plant Community Zonation

Zonation of vegetation appropriate	10
	7
	5
	3
	0
Zonation of vegetation inappropriate	0

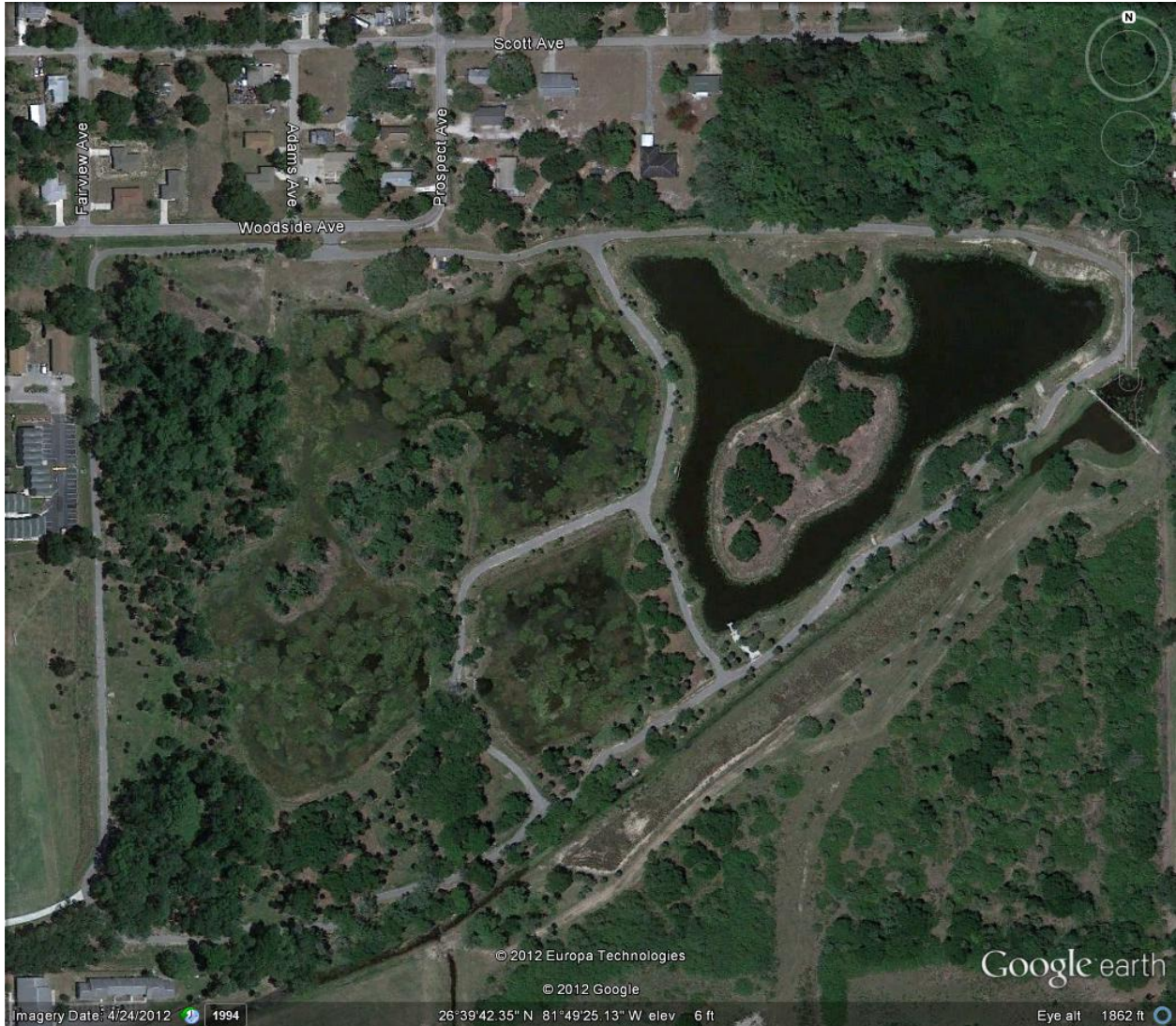
Plant Community Zonation score =

Plant Cover

Plant cover characteristic for that wetland type	10
Most of the plant cover characteristic for that wetland type	7
Half of the plant cover characteristic for that wetland type	5
Some of the plant cover characteristic for that wetland type	3
Plant cover completely uncharacteristic for that wetland type	0

Plant cover score =

Notes:



Located within the City of Fort Myers, this property is located on the north bank of Billy's Creek canal directly west of Billy Bow Legs Park. The filter marsh is possible through a three-way partnership of government agencies. Lee County is bought the land; the South Florida Water Management District helped pay for the construction of the filter marsh with an \$839,000 grant; and the City of Fort Myers paid the remainder of the construction costs, did the construction work and maintains the filter marsh. The property's two native plant communities, cypress slough and oak hammock, remained untouched by the filter marsh.

This project enhances the water quality of Billy's Creek and the Caloosahatchee River through a system of weirs, and includes an 8-acre lake and 13.4 acres of filter marshes. The park surrounding the filter marsh provides hiking and cycling trails, picnic areas and kayak and canoe launches. The site will eventually be listed on the Great Calusa Blue Way Trail.

News Press article

September 6, 2008

New park offers environmentally clean fun

BY PAT GILLESPIE

pgillespie@news-press.com

• [Photo gallery: Billy's Creek Filter Marsh Park](#)

Environmentalists and city leaders came together Saturday in east Fort Myers at what will soon be Billy's Creek Filter Marsh Park. It's a 56-acre area designed to cleanse water that runs into the Caloosahatchee River and includes kayak and canoe launches, hiking and biking trails, fishing spots and picnic areas.

Right now, Billy's Creek Canal takes water runoff, pesticides and pollutants from roads and streets into the Caloosahatchee River, said Phil Flood, regional director of the South Florida Water Management District. But in redesigning the 56 acres at Marsh and Woodside avenues, water will flow south in Billy's Creek canal and, through a dam system, be filtered into settling lakes and a marsh filter area and back into the canal. The process will trap those pollutants in the marsh, leaving clean water for the river.

"This is a water treatment facility disguised," Flood said. "The community's going to see it as a residential park."

City Councilman Warren Wright began the project about two years ago, visiting legislators in Tallahassee. He was able to get \$500,000 and another \$839,000 from the water management district. The city contributed \$892,000 and the county's Conservation 20/20 program negotiated the \$2.5 million purchase of the land from the Fort Myers Housing Authority.

Wright said to get so many bureaucracies together on one project is significant. He hopes the project will be complete in eight to 12 months.

He said the 20/20 program typically purchases pristine land in secluded areas, but to purchase property in an urban area is a refreshing change.

"That's never been done before," he said. "I'm really appreciative of their out-of-the-box thinking."

Wright envisions schools treating the park as an "open-air classroom," able to allow students to test water quality and learn about nature. Lee Middle School is only about a third of a mile down the road and a new elementary school will open soon on Marsh Avenue.

Wright also said he hopes to add aerators to quell the marsh's smell and lighting on the trails for safety.

He said east Fort Myers needs more parks and recreational areas.

"This is an area that is truly underserved," he said. "This area deserves something nice."

Emma Smith, who lives across the street from the park on Madison Avenue, said it is a welcome addition to the neighborhood.

"It couldn't be better," she said. "We need things in the community — this is going to be fantastic."

Billy's Creek Filter Marsh Web Resources

<http://www.meetup.com/fortmyerskayaking/events/11322740/>

http://en.wikipedia.org/wiki/Billy%27s_Creek

http://news.caloosahatchee.org/docs/Groundbreaking_080906.htm

http://news.caloosahatchee.org/docs/News_Press_090906.htm

<http://www.news-press.com/apps/pbcs.dll/gallery?Avis=A4&Dato=20080906&Kategori=NEWS01&Lopenr=809060802&Ref=PH>

http://www.epa.gov/owow_keep/estuaries/pivot/2008charl_charts.html

http://crca.caloosahatchee.org/crca_docs/NewsPress_070710.htm

http://www.cityftmyers.com/Departments/PublicWorks/Divisions/Engineering/Information/StormwaterInformation/CapitalImprovementProjects/tabid/944/DMXModule/2618/Command/Core_Download/Default.aspx?EntryId=4422

<http://wrightg.com/press.php>

http://www.southeastwaterforum.org/files/SEWTF09_Rawl&MacPhee.pdf

<http://www.nbc-2.com/story/12583543/billys-creek-preserve-opens-to-public?redirected=true>

<http://www.reedconstructiondata.com/building-types/park-buildings/florida/projects/1000943817/>

<http://www.news-press.com/apps/pbcs.dll/gallery?Avis=A4&Dato=20090808&Kategori=GREEN&Lopenr=908080809&Ref=PH>

<http://www.conservation2020.org/Pages/preservedetails.aspx?projid=35>

<http://webmii.asia/Result.aspx/Billy/Creek>

<http://www.abc-7.com/Global/story.asp?S=12583543>

http://www.swflregionalvision.com/content/agendas/2011/11-Nov/WQFAM/1111_Summary.pdf

<http://www.backtenfeet.com/2012/02/waters-we.html>

<http://www.frej.net/news/southwest-florida/2010-10-03/lee-bia-marks-summit-award-winners>

